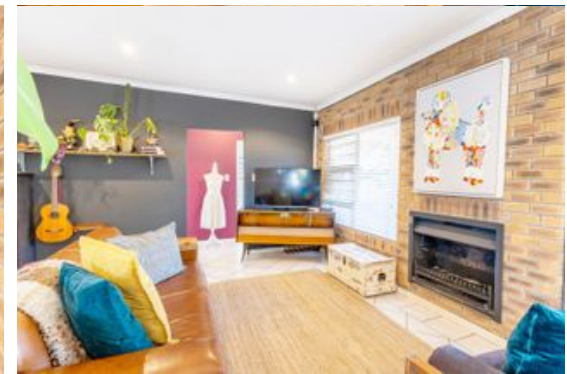


Web Ref: RL12928



Notting
Hill

Notting
Hill



Townhouse To Let Sonstraal Heights

13 Pascali Street

R21,000 pm

3 2 2

Interior

Floor Size	170m ²
Bedrooms	3
Bathrooms	2
Reception Rooms	1

Exterior

ERF Size	359m ²
Security	Yes
Pool	No
Pet Friendly	Yes
Carports	2

3 Bedroom Townhouse – Sonstraal Heights

Welcome to this spacious property ideally situated in Nottingham Estate, Sonstraal Heights. The kitchen has a double basin, electric oven, hob and a water point. It flows into the living area featuring a fireplace. Sliding doors lead you into the braai room with a built in braai. The low-maintenance garden and patio offers an additional built-in braai. All three bedrooms have laminate flooring and built in cupboards. The main bedroom has an en-suite with a basin, toilet and a shower where as the family bathroom has a basin, toilet, shower and a bathtub. For security, the property has an alarm as well as beams and burglar bars, and the estate has CCTV surveillance. Additionally, the house has an inverter powering everything except the oven, hob and geyser.

Disclaimer: Although all details are believed to be correct, we cannot guarantee the validity of the information here.



Scan QR
code for
more details

REALTORS
GROUP



Mishka Lerm

**Candidate Property
Practitioner**

061 362 1507

021 9755720

mishka@realtorsgroup.co.za